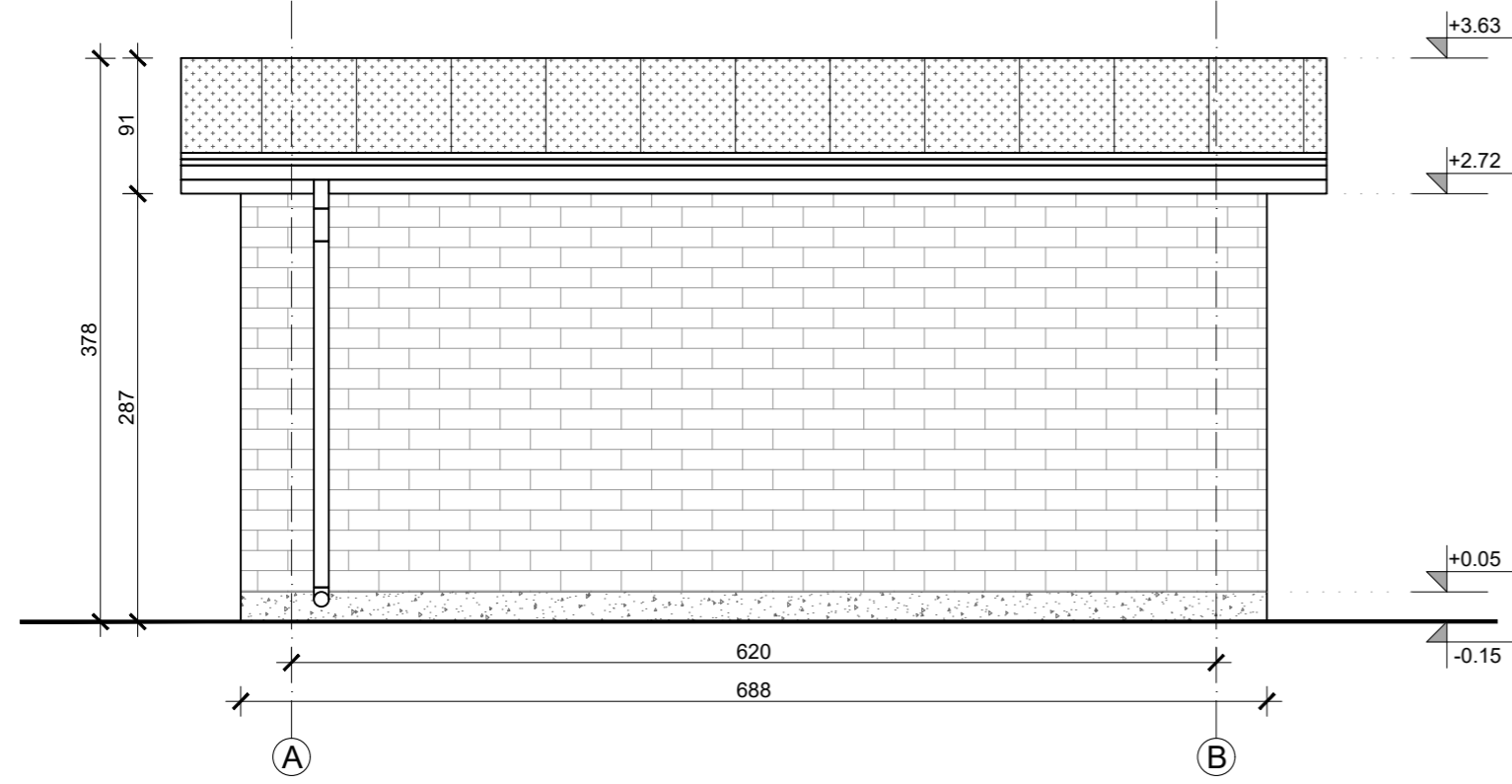
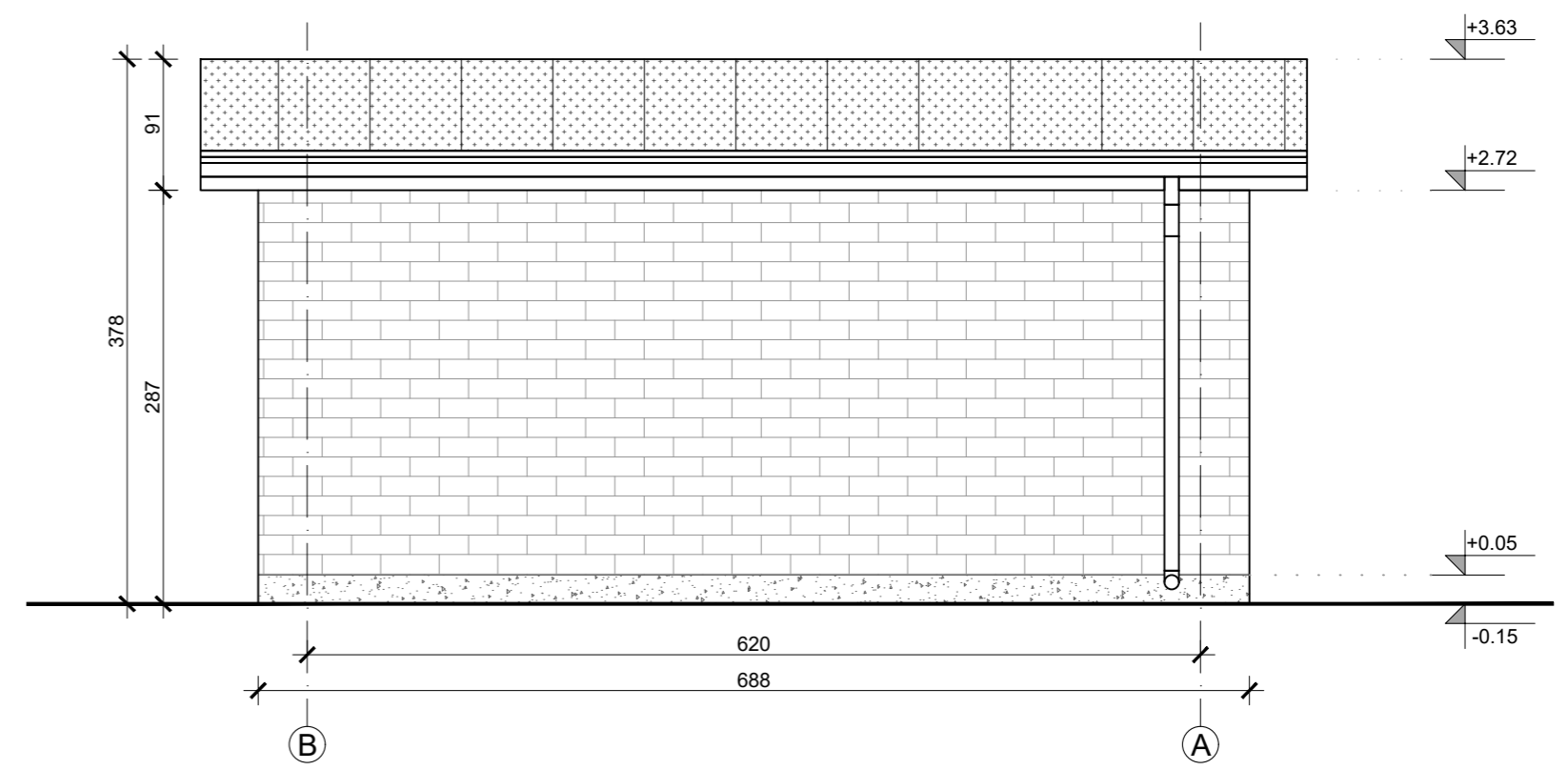


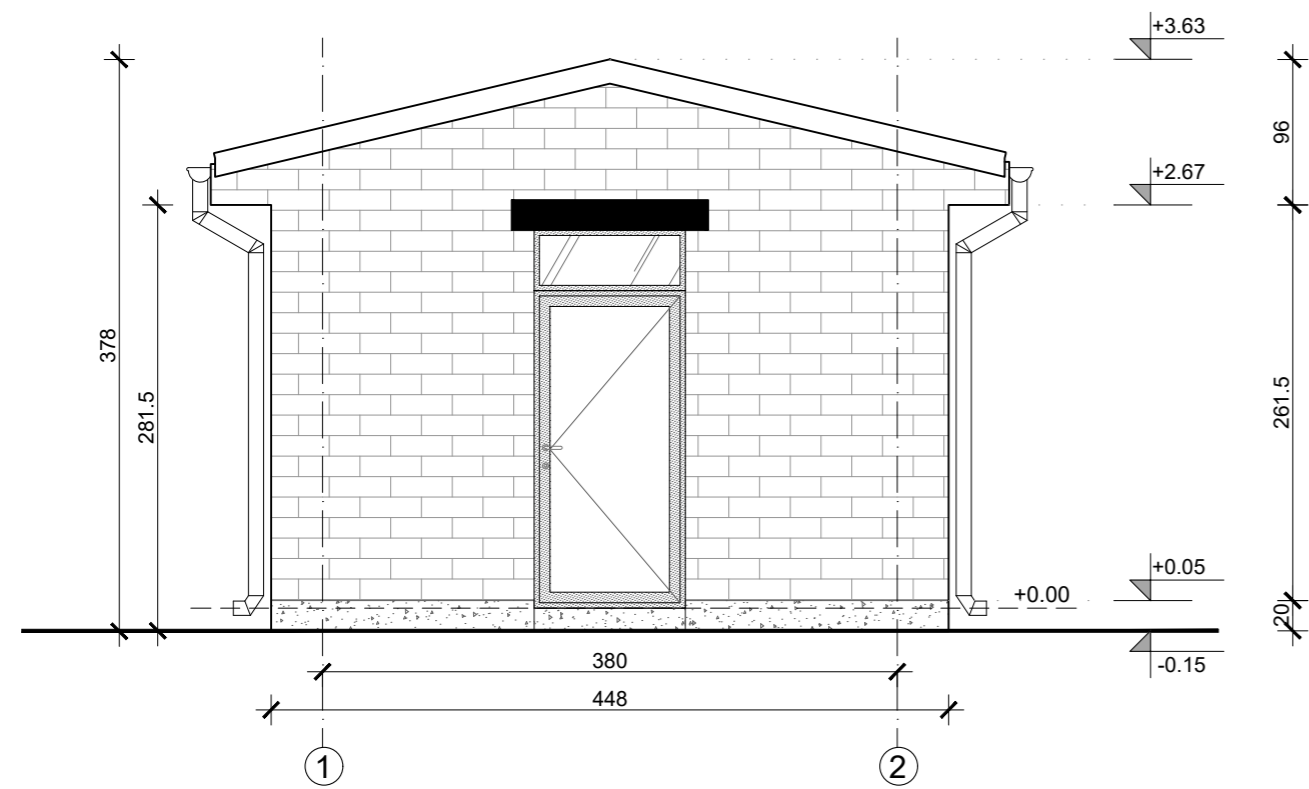
FASADA A-B



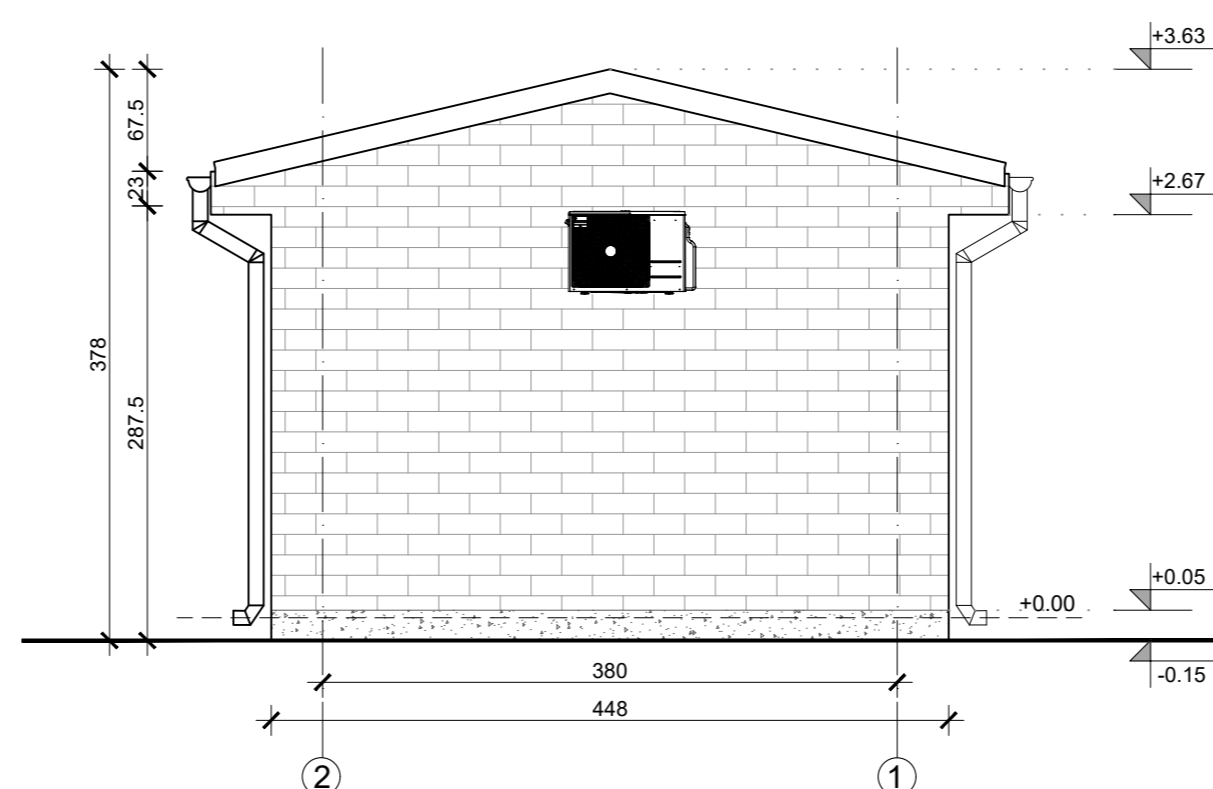
FASADA B-A





FASADA 1-2



FASADA 2-1



± 0.00 = +282.38 - Apsolutna kota za relevelnu kućicu

| | | | | | | |
|--|-----------|--------------|--|------------|----------|-------------|
| Rev. | Datum | Opis | Odg. Projektant | Projektant | Crtao | Kontrolisao |
| 0 | Maj 2024. | Prvo izdanje | Z. Sekulić | Z. Sekulić | N. Negić | V. Vraneš |
| Investitor: | | | Projektant: | | | |
|  SERBIA ZIJIN MINING d.o.o Bor Suvaja 185A, 19210 Bor, Srbija | | |  Global Substation Solutions d.o.o. Bul. Mihajla Pupina 115 d 11000 Beograd | | | |
| Vrsta tehn. dokumentacije: | | | Naziv objekta: | | | |
| IDEJNO REŠENJE (IDR) | | | TS 110/10 KV BOR 9 | | | |
| Oznaka i naziv dela projekta: | | | Naziv crteža: | | | |
| 1. PROJEKAT ARHITEKTURE | | | RELEJNA KUĆICA - FASADE | | | |
| Odg. projektant / br. licence: | | | Broj crteža: | | | |
| Projektant: | | | GSS-TSB9-IDR-001-011 | | | |
| Crtao: | | | Razmera: | | Format: | |
| Kontrolisao: | | | 1:50 | | A2 | |
| | | | List: | | Listova: | |
| | | | 2 | | 2 | |
| | | | Revizija: | | 0 | |